

Cargo Aids

- Designed for helicopters capable of lifting up to 3,300 lbs (1497Kg) and used extensively used by the Royal Navy, Royal Air Force and Army on the Lynx, Super Lynx and Gazelle helicopters.
- The SACRU 2 Mk 2 is configured for use on the Eurocopter Dauphin helicopter. The design is of simple construction involving no delicate mechanisms requiring fine adjustment.
- Now available with load measurement to enable pilots to measure the weight of Cargo, and monitor the airframe.



Agusta Westland Approved

The SACRU 2 has been selected by Agusta Westland for installation on Lynx, Super Lynx and Gazelle.

Auto Touch Down

This hook is available with Auto Touch Down feature - when the pilot arms the switch, loads can be released from the cargo hook on touch down - automatically.

Load On Indication

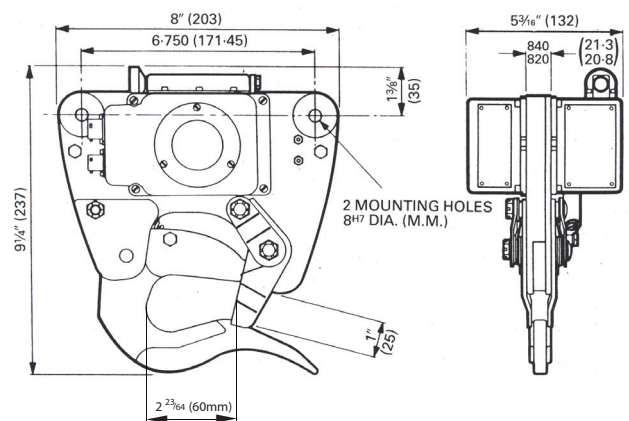
The SACRU 2 informs the pilot of the status of the load at all times with load on and load off indication.

Load Measurement

We offer a range of Load Measuring solutions to suit our range of twin and single point suspension Cargo Hooks.

Hook Specification

Proof Load:	9,900lb	(4,500 Kg)
Unit Weight:	9.0 lb	(4.1 Kg)
Ultimate Load:	13,200 lb	(5,987 Kg)
Man. Pull Off at Rated Load	20 lb Max	(9.1 Kg)
Minimum Release Load:	10 lb	(4.54 Kg)
Electrical Requirement:	20-28vDC	10 Amps
Electrical Connector:	To Customer Specification	



Part No.

Helicopter

CA3000	Agusta Westland Lynx/Super Lynx
CA3000	Agusta Westland Eurocopter Gazelle
CA3000-33	Eurocopter Dauphin
73CA42	HAL Advanced Light Helicopter

SACRU 2 Mk 1 & Mk 2 Cargo Hook

The Drallim Group

Leading innovators in technology and quality